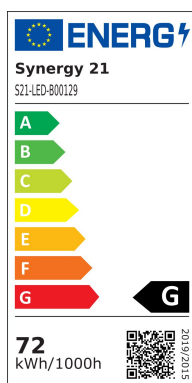
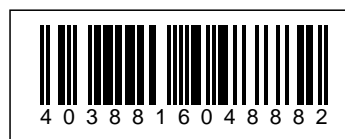


## Synergy 21 LED-Flex-Streifen 60 WW DC24V 36W IP20 S-Form



kwh/1000h:	72,00
Lumens:	5400
Watt:	72,0
Nominal Service Life:	35000 Std.
Switching Cycles:	50000
Opt. Ambient Temperature.:	25 °C



LED Flex Strip warm white, PCB white, S-shape  
DC24V, max. 3A, 36W ± 10%, 7.2W/M  
300Leds, 120°, 2835SMD,  
can be shortened every 6 LEDs  
Length: 5000\*5\*3mm,  
Lumen: 5400 ± 10%  
3000K ±250  
indoor  
open cable end  
Adhesive tape for mounting aid on the back

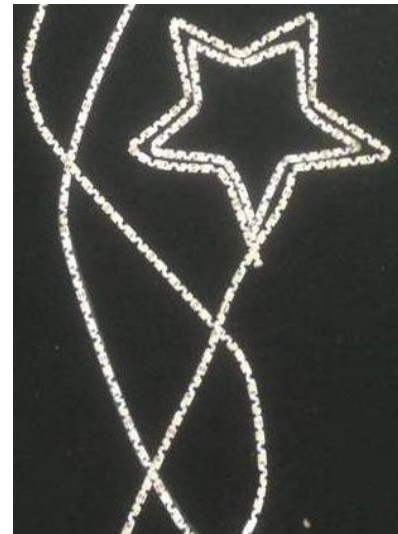
Please note that LED strips must also be cooled.  
Make sure that the LED strip does not exceed a working temperature of 40°C, otherwise its service life cannot be guaranteed.

### Attributes

Attribute	Value
Abstrahlwinkel:	120
Ampere:	3
CC oder CV:	CV

Attribute	Value
CRI:	>80
Dimmbar:	abhängig vom Netzteil
Länge:	5
LED Strip Klebeband:	ja
LED Strip Breite:	5
LED Strip Höhe:	3
LED Strip Klebeband:	ja
LED Strip kürzbar:	50
LED Strip Länge:	5000
Lichtfabe in Kelvin:	3000
Lichtfarbe:	warmweiß
Lichtfarbe in Kelvin:	3000
Lichtfarbe Name:	warmweiß
Lumen:	5400
Schutzklasse:	IP20
Volt:	24
Weight:	0.2 Kg
Warranty:	24.00 Months

## Additional Images



## Accessories

Part No.	Name
81069	Synergy 21 LED zub Hollow Socket with Screw Terminals
81068	Synergy 21 LED zub wooden plug with screw terminals
81741	Synergy 21 LED Flex Strip add. Silicone mounting clip 10 pack
89592	Synergy 21 Power supply - 12V 96 Watt
93680	Mean Well power supply - 24V 80W dimmable IP65
174020	Synergy 21 Power supply - 24V 100W BILTON
174613	Synergy 21 LED FLEX Strip zub. Easy Connect Strip to strip Joint 5mm
174604	Synergy 21 LED FLEX Strip zub. Easy Connect Strip to Wire 5mm