

2.4GHz Wireless Dimming (3-Zone)

Model No.: PUSH2-3

Features

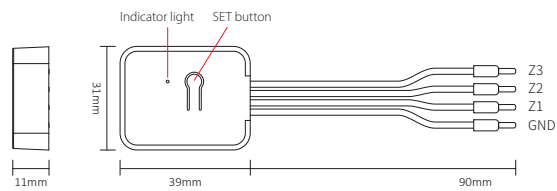
- CR2032 battery powered
- No wiring, easy to realize wireless dimming of PUSH switch
- Compatible with MiBoxer / Mi-Light 2.4G series lamps
- Adopt 2.4G RF wireless transmission technology, control distance 30 meters
- Supports 3 sets of independent control, unlimited number of lamps
- Supports 4096 levels of smooth dimming, with a minimum brightness of 0.1%
- Dimming range 0.1%-100%



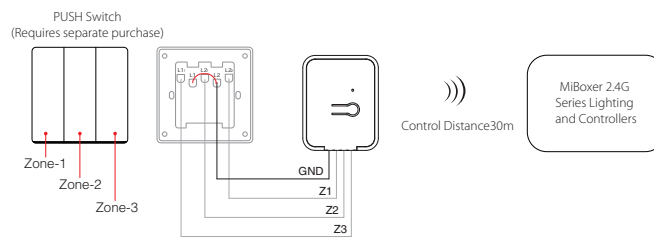
Product Parameters

Product Name:	2.4GHz Wireless Dimming (3-Zone)
Model No.:	PUSH2-3
Input Voltage:	3V (CR2032*1PCS)
Transmitting Power:	6dBm
RF:	2.4GHz
Control Distance:	30m
IP Rating:	IP20
Working Temperature:	-10~40°C
Standby Power Consumption:	<3μA

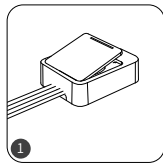
Dimming Grayscale:	4096 Levels
Dimming Range:	0.1%-100%
EMC Standard (EMC):	ETSI EN 301 489-1 V2.2.3 ETSI EN 301 489-3 V2.1.1
Safety Standard (LVD):	EN 61347-1: 2015+A1: 2018 EN 61347-2-11: 2001+A1:2019
Radio Equipment (RED):	ETSI EN 300 440 V2.2.1
Certification:	CE, EMC, LVD, RED



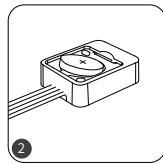
Connection Diagram



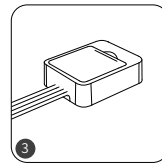
Install batteries



Open battery cover

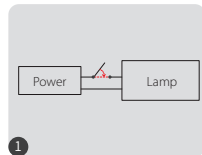


Install CR2032 battery
(Requires separate purchase)

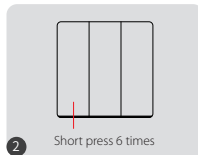


Close the battery cover

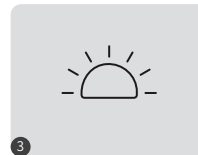
Linking Code Instructions



Power off, then power on again after 10 seconds



Short press the "PUSH" 6 times within 3 seconds

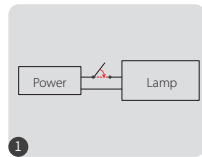


The lamp flashes slowly 3 times, indicating successful linking

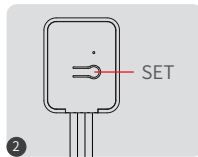


If the lamp does not flash slowly, the code binding failed, please re-perform the above steps.
(Note: Already coded lamps cannot be coded again).

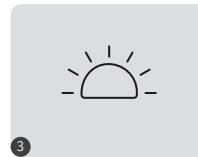
Unlinking Code Instructions



1 Power off, then power on again after 10 seconds



2 Short press the "SET" 5 times within 3 seconds



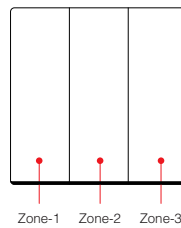
3 The lamp flashes quickly 10 times, indicating successful unlinking



If the light does not flash quickly, the code clearing failed, please perform the above steps again.
(Note: Already coded lamps cannot be coded again).

Dimming control

- Supports 3 sets of independent control, unlimited number of lamps
- Short press to turn on/off the light, long press to adjust the light brightness.



Notice

1. Please do not use it in a humid or high temperature environment for a long time. When not in use for a long time, please remove the battery and store it in a dry, static-free environment.
2. Do not use it in an environment with a large area of metal or near strong electromagnetic waves, otherwise the control distance will be seriously affected.



Made in China