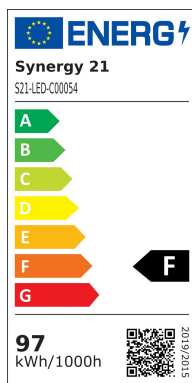


Synergy 21 LED Flex Strip 240 NW DC24V 89W IP68 CRI>90 2216



kwh/1000h:	97,90
Lumens:	7150
Watt:	89,0
Nominal Service Life:	35000 Std.
Switching Cycles:	50000
Opt. Ambient Temperature.:	25 °C



Synergy 21 LED Flex Strip 2216 Series
2216=LED chip size 2.2mm x 1.6mm

Length: 5m
Voltage: 24V,
Watt: 17,8W/m, 89W±10%
Light colour: neutral white, 4000K, CRI>95-97
Brightness: 1430lm/m ±10%, total: 7150lm
Beam angle: 120°
Protection class: IP68(Super slim)
Number of LEDs: 240*2216SMD/m, total: 1200LEDs
Dimensions: 5000*10*3 mm
PCB colour: white, open cable end red black (150±5mm)
Operating temperature: -25°C to +40°C
Weight: 0.500kg
Can be shortened every 6 LEDs 2.5cm
Adhesive tape: yes 3M on the back

Energy efficiency class: A
kWh/1000h: 97.9

Strip can be shortened at the cut marks with sharp scissors.
!Attention! Strip must first be checked for functionality.
Only split the strip when no current is present.

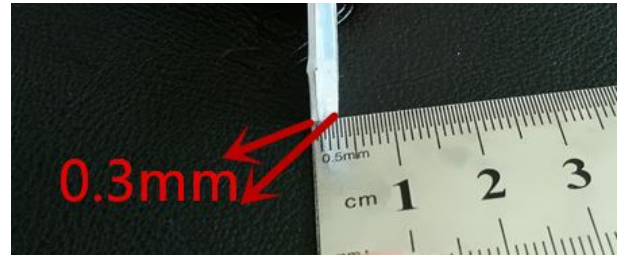
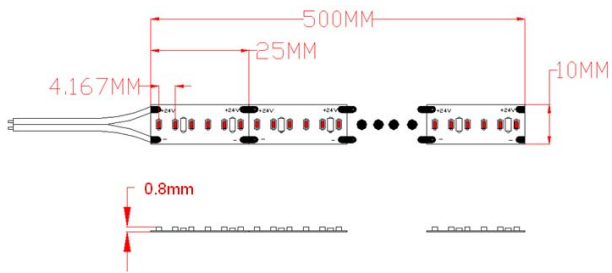
Our 3M adhesive tape adheres well, but should only be used as a mounting aid.
There are a variety of mounting options, such as clips, permanently elastic mounting adhesive, cable ties, etc.

Please note that LED strips must also be cooled.
Make sure that the LED strip does not exceed a working temperature of 40°C, otherwise its service life cannot be guaranteed.
No guarantee can be given for overheated LED strips.

Attributes

Attribute	Value
Abstrahlwinkel:	120
Ampere:	3.70
CC oder CV:	CV
CRI:	>90
Dimmbar:	abhängig vom Netzteil
Länge:	5
LED Strip Klebeband:	ja
LED Strip Breite:	10
LED Strip Höhe:	3
LED Strip Klebeband:	ja
LED Strip kürzbar:	25
LED Strip Länge:	5000
Lichtfabe in Kelvin:	4000
Lichtfarbe:	neutralweiß
Lichtfarbe in Kelvin:	4000
Lichtfarbe Name:	neutralweiß
Lumen:	7150
Schutzklasse:	IP68
Volt:	24
Weight:	0.3 Kg
Warranty:	24.00 Months

Additional Images



Accessories

Part No.	Name
93682	Mean Well Power Supply - 24V 150W Dimmable IP65