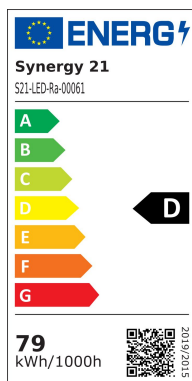
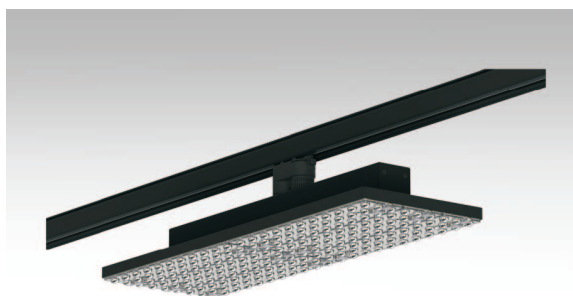
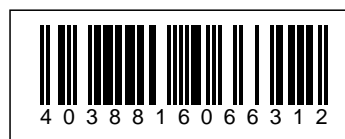


## Synergy 21 LED track series for track-plate standard DA nw



kwh/1000h:	79,20
Lumens:	9300
Watt:	72,0
Nominal Service Life:	40000 Std.
Switching Cycles:	50000
Opt. Ambient Temperature.:	25 °C



LED module for Synergy21 LED RailLine LED track system Powergear  
 Size: 580x190x120mm (LxWxH)  
 Colour: black RAL9006  
 Lumen: 9300lm @72W  
 Light colour: 4250K ±250, RA>83  
 Beam angle: 25°  
 Watt: 72W can adjust to 66W/62W/58W/54W/50W/46W/42W  
 Cabling: Track adapter, ERCO compatible  
 Protection class: IP20 / IK06

5-year guarantee, ENEC and IK06 certified

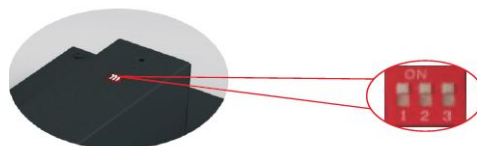
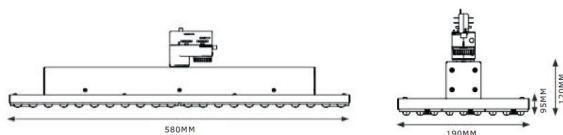
Energy efficiency class: A++  
 kWh/1000h: 79.2

## Attributes

Attribute	Value
Abstrahlwinkel:	90
CRI:	>83
Dimmbar:	nein

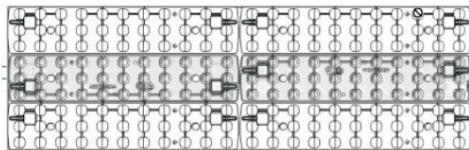
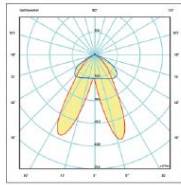
Attribute	Value
Grösse:	580*190*120
LED - Gehäusefarbe:	schwarz
LED - Gehäusematerial:	Aluminium
Lichtfarbe:	neutralweiss
Lichtfarbe in Kelvin:	4250
Lumen:	9300
Schutzklasse:	IP20
Sockel:	3Phasen
Volt:	230
Weight:	2 Kg
Warranty:	60.00 Months

## Additional Images



PI	Po	Irated	1	2	3
72W	60W	1800mA	—	—	—
66W	56W	1700mA	ON	—	—
62W	53W	1600mA	—	ON	—
58W	50W	1500mA	ON	ON	—
54W	46W	1400mA	—	—	ON
50W	43W	1300mA	ON	—	ON
46W	40W	1200mA	—	ON	ON
42W	36W	1100mA	ON	ON	ON

6xDA25°(DA)



DA 25°

DA 25°

DA 25°



## Accessories

Part No.	Name
143499	Synergy 21 von EUTRAC 3-AUFBAUSCHIENEN-Set, Weiss, 6 Meter
233432	Powergear 3PH AUFBAUSCHIENE, Weiss, 1 meter
233434	Powergear 3PH AUFBAUSCHIENE, Schwarz, 1 meter
233435	Powergear 3PH AUFBAUSCHIENE, Weiss, 2 meter
233436	Powergear 3PH AUFBAUSCHIENE, Schwarz, 2 meter
233437	Powergear 3PH AUFBAUSCHIENE, weiß, 3 meter

Part No.	Name
233438	Powergear 3PH AUFBAUSCHIENE, Schwarz, 3 meter
233439	Powergear 3PH EINBAUSCHIENE, Weiß, 1 meter
233440	Powergear 3PH EINBAUSCHIENE, Schwarz, 1 meter
233442	Powergear 3PH EINBAUSCHIENE, Weiß, 2 meter
233445	Powergear 3PH EINBAUSCHIENE, Schwarz, 2 meter
233446	Powergear 3PH EINBAUSCHIENE, Weiß, 3 meter
233447	Powergear 3PH EINBAUSCHIENE, Schwarz, 3 meter