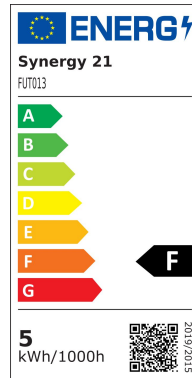


Synergy 21 LED retrofit E14 5W RGB-WW lamp with RF and WLAN *Milight/Miboxer*



kwh/1000h:	5,00
Lumens:	450
Watt:	5,0
Nominal Service Life:	35000 Std.
Switching Cycles:	50000
Opt. Ambient Temperature.:	25 °C



Experience innovative and flexible lighting with the **5W E14 RGB+CCT LED Light Bulb**. This modern LED light source offers you a wide range of colours and colour temperatures to always create the perfect lighting mood for any room.

The **5W E14 RGB+CCT LED Light Bulb** can be controlled with both a wireless remote control and a Wi-Fi controller for iOS and Android, both of which are available separately (see accessories). These versatile control options allow you to adjust the lighting conveniently and flexibly, whether for a cosy atmosphere or a bright working light.

With an output of 5W and an operating voltage of AC86-265V at 50-60Hz, this LED bulb offers an impressive light output. The variable colour temperature from 2700K to 6500K allows you to switch between warm and cool white, while the RGB+CCT function provides a variety of colours. With a luminous flux of 450 lumens and a light efficiency of 90LM/W, this bulb provides bright and energy-efficient illumination. The colour rendering index (CRI) of over 80 ensures a natural and vivid colour representation.

The wide beam angle of 240° ensures even light distribution in your rooms. Thanks to the robust aluminium and PC construction, the LED bulb is durable and reliable. The compact size of F60*117mm makes it ideal for a wide range of applications. With a power factor of over 0.5, the bulb is particularly energy efficient.

This LED light source fits into any standard E14 socket and has a control range of up to 30 metres, so you can easily adjust the lighting from a distance. The energy consumption is only 5 kWh per 1000 hours, making this LED bulb an environmentally friendly and cost-efficient choice.

Transform your home with the **5W E14 RGB+CCT LED Light Bulb** and enjoy the benefits of a smart and customisable lighting solution.

RGB-CCT E14 light source

Controllable with wireless remote control and/or WLAN controller for iOS and Android, both available separately, see accessories

Product Name: 5W E14 RGB+CCT LED Light Blub

Model No: FUT013

Power: 5W

Voltage: AC86-265V / 50-60Hz

Kelvin: 2700~6500K

Luminous Flux: 450LM

Luminous Efficiency: 90LM/W

CRI: >80

Base Type: E14

Beam Angle: 240°

PF: >0.5

Material: Aluminium+PC

Control Distance: 30m

Size: F60*117mm

Energy efficiency class: F

kWh/1000h: 5

Attributes

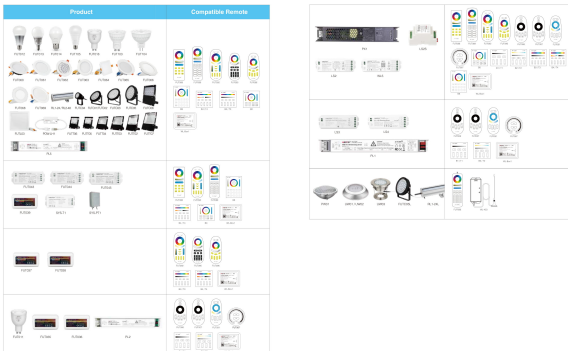
Attribute	Value
Abstrahlwinkel:	240
CRI:	80
Dimmbar:	Ja
Grösse:	60*117
LED - Gehäusematerial:	Aluminium
Lichtfarbe:	RGB-WW
Lichtfarbe in Kelvin:	2700~6500
Lumen:	450
Sockel:	E14
Volt:	230
Weight:	0.1 Kg

Additional Images





COMPATIBLE REMOTE SHEET



Accessories

Part No.	Name
147981	Synergy 21 LED remote RGB-WW (RGB-CCT) 8 zones *Milight/Miboxer*
147982	Synergy 21 LED remote RGB-WW (RGB-CCT) 4 zones *Milight/Miboxer*
148005	Synergy 21 LED remote smart panel RGB-WW (RGB-CCT) 4 zones *Milight/Miboxer*
148006	Synergy 21 LED remote smart panel RGB-WW (RGB-CCT) 8 zones *Milight/Miboxer*
181054	Synergy 21 LED remote WLAN controller *Milight/Miboxer*
148507	Synergy 21 LED remote WLAN controller smart light *Milight/Miboxer*

Part No.	Name
81942	Synergy 21 LED adapter for LED bulbs E27->E14
111327	Synergy 21 LED socket E27 100cm orange
111328	Synergy 21 LED socket E27 100cm blue
111332	Synergy 21 LED socket E27 100cm yellow